



Kitchen. Design & Technology

Kristall induction cooktop



Product information

Thanks to the particularly flat air outlet, our downdraft ventilation offers you the option of continuing to use the storage space under the stovetop as a drawer. This means you gain more storage space in your kitchen without having to lose space on the cooktop.

Integrated fume cupboard as plug-in solution

Thanks to its compact design, installing the cooktop is child's play. This means less planning effort is required.

Every cookplate with booster

The boost function increases the power of the selected cooktop for a short time and allows you to reach the maximum temperature faster.

Bridge function and temperature zones

With the help of the bridge function, 2 fields can be coupled. This means that even larger roasters can be easily accommodated. Defined temperature levels allow you to grill vegetables, meat and fish at the optimum temperature.

Low installation height

The flat concept gives you more storage space with, for example, an additional drawer under the cooktop.

Product data

Design:

Flush & surface mounting possible
Narrow & compact dimensions
Modern cooking zone labeling

Features & Functions:

Max. space on the cooktop
Clear cooktop layout
Interactive Flex Slider Touch
Power level for each cooking zone
Bridge function on the right
Automatic boil-on function
Automatic pot detection
Timer & short time alarm,
Pause & recall function
Melt setting 42°, heat holding setting 70°, simmer setting 94°
Grill function
Integrated automatic ventilation
control in 10 steps with slider
Energy-saving EC fan
Filter change indicator
Increased space
Easy cleaning
Stainless steel components for more hygiene

Safety:

Interlock, child safety lock, safety shutdown,
Sensor circuit / Flex Slider, residual heat indicator

Included:

Induction cooktop
Power cable
Stainless steel grease filter
Sealing strip
Cooking tongs
Microfibre cloth
Cover glass
Instructions for use and assembly
Care instructions

Unit dimensions (W x H x D) & weight (kg):

830 × 84 × 515 mm
8,6 kg

Cutout dimensions (W x D):

805 × 490 mm

Cooking zones:

2 induction cooking zones

190 × 220 mm, 2,1/3,7 kW

2 induction cooking zones

190 × 220 mm, 2,1/3,5 kW

Bridge function

left and right, 390 × 220 mm, 3,7 kW

Connection values:

Voltage AC 220-240 V / 2NAC 400 V, 50/60 Hz
Power 7,4 kW

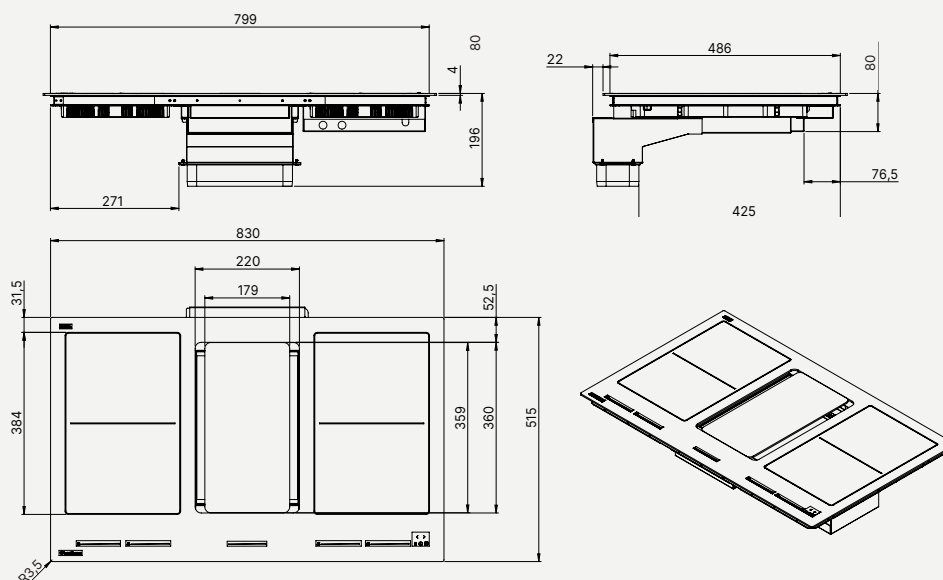
Technical data pedestal fan:

Operating mode:	circulation or extraction
Max. power:	576 m ³ /h
Motor:	168 W
Control:	9 levels+ Power + run-on function
Air output motor:	NW 150
Operating noise:	min. 32 dBA / max. 68 dBA
Grease separation:	95,1 %
Grease separation Class:	A

Accessories:

Air extraction set (9500000395)
Recirculation set carbon filter in base (9500000396)
Recirculation set charcoal filter with socket cover (9500000397)
Plasma filter in socket (9500000387)
Plasma filter back panel (9500000388)

Technical drawings



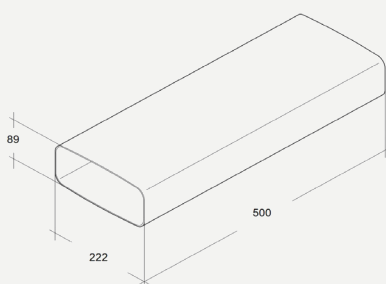


Saphir / Kristall
Zubehör **Umluftset AKB 200**

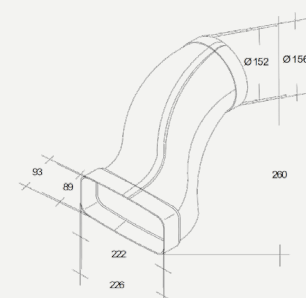
Produktinformationen

Die optimAIRo-Ab- und Umluftmodule sind ideal, um individuell passende Ab-/Umluftleitungen in der Küche zu montieren. Wer eine Luftführung für Innenräume plant, sollte auf eine möglichst kurze und geradlinig verlaufende Leitung achten. Optimal für einen ungehinderten Luftstrom sind die optimAIRo-Flachkanalsysteme.

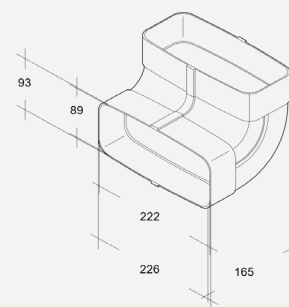
Flachkanal



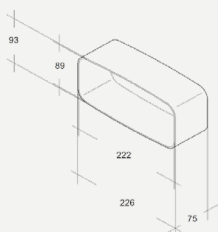
Übergangsstück versetzt



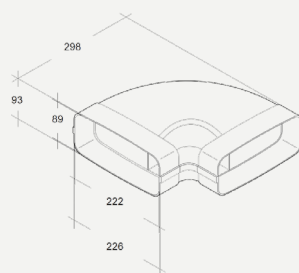
Rohrbogen senkrecht



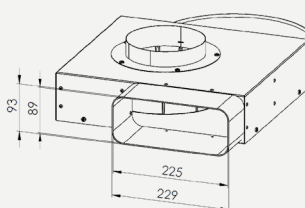
Verbinder



Rohrbogen waagrecht



Sockelmotor



Aktivkohlebox 200

